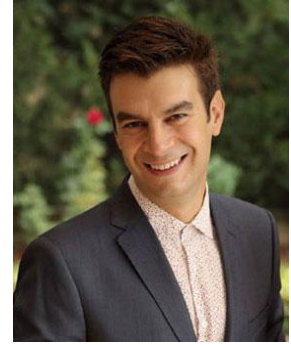


**Dimitris PITILAKIS**

Associate Professor  
Department of Civil Engineering  
Faculty of Engineering  
Aristotle University of Thessaloniki  
Greece

[dpitilakis@civil.auth.gr](mailto:dpitilakis@civil.auth.gr)  
[sites.google.com/view/dimitrispitilakis](https://sites.google.com/view/dimitrispitilakis)

**Short CV**

Dimitris Pitilakis is an Associate Professor in the Department of Civil Engineering of the Aristotle University of Thessaloniki, Greece (M.Sc. University of California, Berkeley, Ph.D. in earthquake engineering from Ecole Centrale Paris, France). He is an expert in geotechnical earthquake engineering, emphasizing soil –foundation –structure interaction, dynamics of foundations, and performance-based design. Lately, he has been working on the earthquake vulnerability assessment of soil-foundation-structure systems on a local and city scale. He is the author of more than 110 papers in peer-reviewed scientific journals and international conference proceedings. He is a member of national and international scientific societies on Earthquake Engineering and a reviewer of international scientific journals. He has developed software to simulate the soil-foundation-structure interaction, emphasizing nonlinear soil and structure behavior, and software for foundation design and analysis. He has extensive experience in experimental soil-foundation-structure interaction in small-scale (shaking table and centrifuge) and full-scale (EuroProteas in Euroseistest <http://euroseisdb.civil.auth.gr/sfsis>) facilities. He is currently in charge of the shaking table and the full-scale EuroProteas facility of the Soil Dynamics and Geotechnical Earthquake Engineering Laboratory of the Aristotle University of Thessaloniki.

[LinkedIn](#) | [ResearchGate](#) | [Twitter](#)